



# INTERNATIONAL JOURNAL OF ADVANCE RESEARCH, IDEAS AND INNOVATIONS IN TECHNOLOGY

ISSN: 2454-132X

Impact Factor: 6.078

(Volume 7, Issue 5 - V7I5-1393)

Available online at: <https://www.ijariit.com>

## An overview on application areas of soft computing

Dr. Shailendra Kumar Srivastava

[dr.shailendra61@gmail.com](mailto:dr.shailendra61@gmail.com)

Mahatma Gandhi Post Graduate College, Gorakhpur, Uttar Pradesh

### ABSTRACT

*We know that the Soft Computing refers to the science of reasoning, thinking and deduction that recognizes and uses the real-world phenomena of grouping, memberships, and classification of various quantities under study. As such, it is an extension of natural heuristics and capable of dealing with complex systems because it does not require strict mathematical definitions and distinctions for the system components. It differs from hard computing in that, unlike hard computing, it is tolerant of imprecision, uncertainty and partial truth. In effect, the role model for soft computing is the human mind. The guiding principle of soft computing is: Exploit the tolerance for imprecision, uncertainty and partial truth to achieve tractability, robustness and low solution cost. The applications of soft computing have proved two main advantages. First, it made solving nonlinear problems, in which mathematical models are not available, possible. Second, it introduced the human knowledge such as cognition, recognition, understanding, learning, and others into the fields of computing. This resulted in the possibility of constructing intelligent systems such as autonomous self-tuning systems, and automated designed systems. This paper highlights various Application areas of soft computing.*

**Keywords**— *Soft Computing, Principle of Soft Computing, Intelligent System*

### 1. INTRODUCTION

In real world, we have many problems which we have no way to solve logically, or problems which could be solved theoretically but actually impossible due to its requirement of huge resources and huge time required for computation. For these problems, methods motivated by nature sometimes work very efficiently and effectively. Although the solutions obtained by these methods do not always equal to the mathematically strict solutions, a near optimal solution is sometimes enough in most practical purposes. These biologically inspired methods are called Soft Computing. Soft Computing is an umbrella term for a collection of computing techniques. The term was first coined by Professor Lotfi Zadeh [1], who developed the concept of fuzzy logic. Soft computing is based on natural as well as artificial ideas. It is referred as a computational intelligence. It differs from conventional computing that is hard computing. It is tolerance of imprecision, uncertainty, partial truth to achieve tractability, approximation, robustness, low solution cost, and better rapport with reality. In fact, the role model for soft computing is human mind. It refers to a collection of computational techniques in computer science, artificial intelligence, machine learning applied in engineering areas such as Aircraft, spacecraft, cooling and heating, communication network, mobile robot, inverters and converters, electric power system, power electronics and motion control etc. Traditionally soft computing has been comprised by four technical disciplines. The first two, probabilistic reasoning (PR), and fuzzy logic (FL) reasoning systems, are based on knowledge-driven reasoning. The other two technical disciplines, Neuro Computing (NC) and Evolutionary Computing (EC), are data – driven search and optimization approaches, which is shown in the fig (1).

### 2. SOFT COMPUTING

Soft computing is not a mélange. Rather, it is a partnership in which each of the constituent contributes a distinct methodology for addressing problem in its domain. In this perspective, the principal constituent methodologies in soft computing are complementary rather than competitive. In fact, soft computing's main characteristic is its intrinsic capability to create hybrid systems that are based on the integration of constituent technologies. This integration provides complementary reasoning and searching methods that allow us to combine domain knowledge and empirical data to develop flexible computing tools and solve complex problems. Hybrid computing is the combination of hard computing and soft computing which having their inherent advantages and disadvantages. To get the advantages of both these techniques their individual limitations are reduced for solving a problem more efficiently by Hybrid computing. Hybrid soft computing models have been applied to a large number of classification, prediction, and control problems.

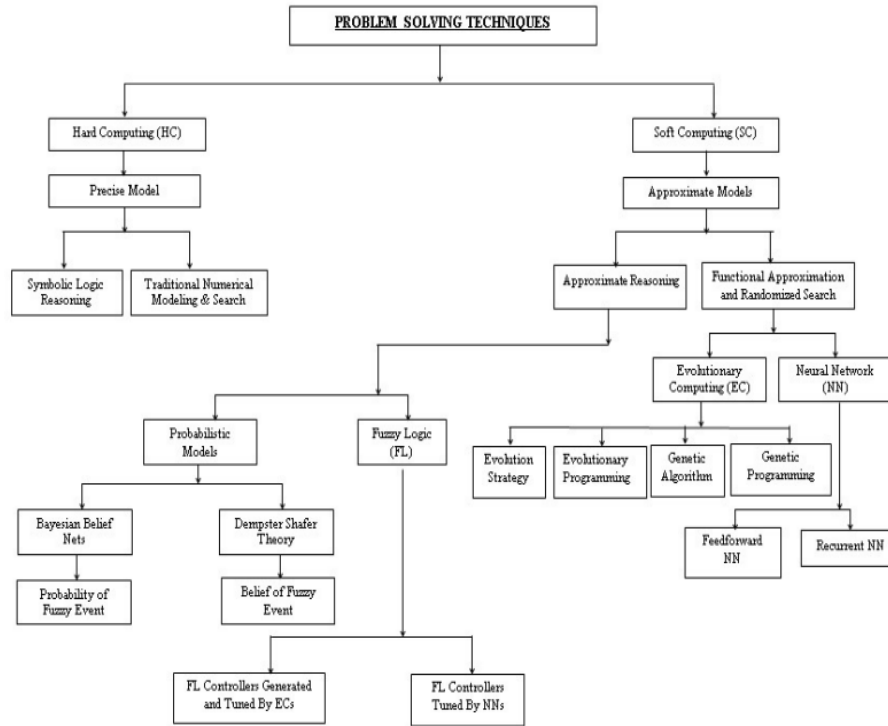


Fig (1)

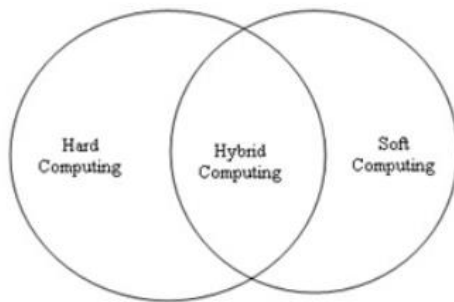


Fig 2

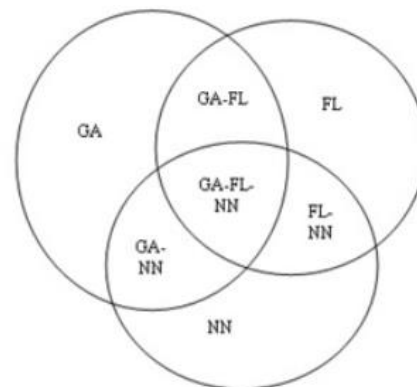


Fig 3

Figures 2 & 3 show schematic diagram of intersections of members of soft computing family & hybrid computing scheme.

### 3. APPLICATION AREAS OF SOFT COMPUTING

Soft computing techniques have become one of promising tools that can provide practice and reasonable solution. Soft computing techniques are used in different fields shown in fig (4).

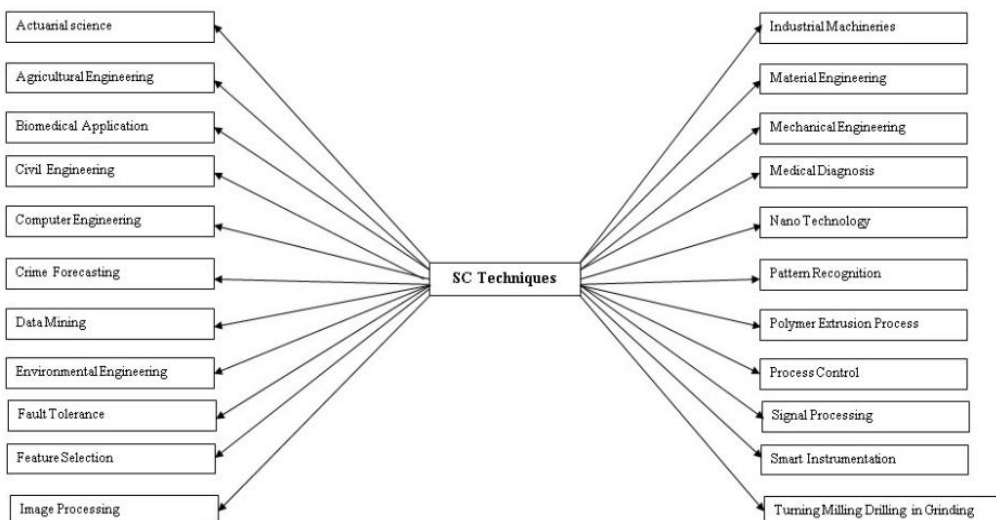


Fig 4

### **3.1 Actuarial Science**

Actuarial science is the discipline that applies mathematical and statistical methods to evaluate risk in the insurance and finance industries. Actuarial science includes a number of interrelating subjects, including probability, mathematics, statistics, finance, economics, financial economics, and computer programming. Historically, actuarial science used deterministic models in the construction of tables and premiums.

### **3.2 Agricultural Engineering**

Agricultural engineering is the engineering discipline that applies engineering science and technology to agricultural production and processing. Agricultural engineering combines the disciplines of animal biology, plant biology, and mechanical, civil, electrical and chemical engineering principles with knowledge of agricultural principles.

### **3.3 Biomedical Application**

Biomedical application is a design concept to medicine and biology. This field seeks to close the gap between engineering and medicine: It combines the design and problem-solving skills of engineering with medical and biological sciences to advance healthcare treatment, including diagnosis, monitoring, treatment and therapy.

### **3.4 Civil Engineering**

Civil engineering is a professional engineering discipline that deals with the design, construction, and maintenance of the physical and naturally built environment, including works like roads, bridges, canals, dams, and buildings. Civil engineering takes place on all levels: in the public sector from municipal through to national governments, and in the private sector from individual homeowners through to international companies.

### **3.5 Computer Engineering**

Computer engineering is a discipline that integrates several fields of electrical engineering and computer science required to develop computer systems. Computer engineers usually have training in electronic engineering, software design, and hardware-software integration instead of only software engineering or electronic engineering. Computer engineers are involved in many hardware and software aspects of computing, from the design of individual microprocessors, personal computers, and supercomputers, to circuit design. This field of engineering not only focuses on how computer systems themselves work, but also how they integrate into the larger picture.

### **3.6 Crime Forecasting**

Crime forecast is a planning tool that helps to manage crime in our society in different way. Crime is the breaking of rules or laws for which some governing authority can ultimately prescribe a conviction. Crimes may also result in cautions, rehabilitation or be unenforced. By the help of crime forecast we can reduce crime in our societies. Computer Science & Information Technology (CS & IT)

### **3.7 Data Mining**

Data mining is a subfield of computer science which is the computational process of discovering patterns in large data sets involving methods at the intersection of artificial intelligence, machine learning, statistics, and database systems. The overall goal of the data mining process is to extract information from a data set and transform it into an understandable structure for further use.

### **3.8 Environmental Engineering**

Environmental engineering is the integration of science and engineering principles to improve the natural environment like air, water, and/or land resources, to provide healthy water, air, and land for human habitation like house or home and for other organisms, and to remediate pollution sites.

### **3.9 Fault-Tolerance**

Fault-tolerance is the property that enables a system to continue operating properly in the event of the failure of some of its components. If its operating quality decreases at all, the decrease is proportional to the severity of the failure, as compared to a naïvely-designed system in which even a small failure can cause total breakdown. Fault-tolerance is particularly sought-after in high-availability or life-critical systems.

### **3.10 Feature Selection**

In machine learning and statistics, feature selection, also known as variable selection, attribute selection or variable subset selection, is the process of selecting a subset of relevant features for use in model construction. Feature selection techniques are a subset of the more general field of feature extraction. Feature extraction creates new features from functions of the original features, whereas feature selection returns a subset of the features.

### **3.11 Image Processing**

In imaging science, image processing is any form of signal processing for which the input is an image, such as a photograph or video frame; the output of image processing may be either an image or a set of characteristics or parameters related to the image. Most image-processing techniques involve treating the image as a two-dimensional signal and applying standard signal processing techniques to it.

### **3.12 Industrial Machineries**

Industries machineries are tool that consists of one or more parts, and uses energy to achieve a particular goal. Machines are usually powered by mechanical, chemical, thermal, or electrical means, and are frequently motorized. This is used in mechanical engineering.

### **3.13 Materials Engineering**

Materials engineering is an interdisciplinary field applying the properties of matter to various areas of science and engineering. This scientific field investigates the relationship between the structure of materials at atomic or molecular scales and their macroscopic properties. It incorporates elements of applied physics and chemistry.

### **3.14 Mechanical Engineering**

Mechanical engineering is a discipline of engineering that applies the principles of physics and materials science for analysis, design, manufacturing, and maintenance of mechanical systems. It is the branch of engineering that involves the production and usage of heat and mechanical power for the design, production, and operation of machines and tools.

### **3.15 Medical diagnosis**

Medical diagnosis refers both to the process of attempting to determine or identify a possible disease and to the opinion reached by this process. From the point of view of statistics the diagnostic procedure involves classification tests.

### **3.16 Nano Technology**

Nanotechnology is the manipulation of matter on an atomic and molecular scale. Generally, nanotechnology works with materials, devices, and other structures with at least one dimension sized from 1 to 100 nanometers. Nanotechnology entails the application of fields of science as diverse as surface science, organic chemistry, molecular biology, semiconductor physics, micro fabrication, etc.

### **3.17 Pattern Recognition**

Pattern recognition generally aim to provide a reasonable answer for all possible inputs and to perform "most likely" matching of the inputs, taking into account their statistical variation. Pattern recognition is studied in many fields, including psychology, psychiatry, and ethology, cognitive science, and traffic flow and computer science.

### **3.18 Polymer Extrusion Process**

A polymer is a chemical compound or mixture of compounds consisting of repeating structural units created through a process of polymerization. Polymers are studied in the fields of biophysics and macromolecular science, and polymer science. Extrusion is a process used to create objects of a fixed, cross-sectional profile. A material is pushed or drawn through a die of the desired cross-section. The two main advantages of this process over other manufacturing processes are its ability to create very complex cross-sections and work materials that are brittle, because the material only encounters compressive and shear stresses.

### **3.19 Process Control**

Process control is a statistics and engineering discipline that deals with architectures, mechanisms and algorithms for maintaining the output of a specific process within a desired range. It is extensively used in industry and enables mass production of continuous processes such as oil refining, paper manufacturing, chemicals, power plants and many other industries. Process control enables automation, with which a small staff of operating personnel can operate a complex process from a central control room. Computer Science & Information Technology (CS & IT)

### **3.20 Signal Processing**

Signal processing is an area of systems engineering, electrical engineering and applied mathematics that deals with operations on or analysis of signals, or measurements of time-varying or spatially varying physical quantities. Types of signals are sound, images, and sensor data, for example biological data such as electrocardiograms, control system signals, telecommunication transmission signals, and many others.

### **3.21 Smart Instrumentation**

As intelligent devices become ubiquitous the challenge is to connect sensors and actuators through smart systems. A major issue is the growing number of communication protocols, with no single standard. The challenge is to intelligently connect smart instrumentation so that devices can communicate across multiple protocols. At the same time, increases in the volume and importance of data means that privacy, security and robustness of systems is paramount.

### **3.22 Turning Milling**

Drilling in Grinding Turning is a machining process in which a cutting tool, typically a non-rotary tool bit, describes a helical tool path by moving more or less linearly while the work piece rotates. Milling is the machining process of using rotary cutters to remove material from a work piece advancing in a direction at an angle with the axis of the tool. It covers a wide variety of different operations and machines, on scales from small individual parts to large, heavy-duty gang milling operations. Drilling is a cutting process that uses a drill bit to cut or enlarge a hole of circular cross-section in solid materials. The drill bit is a rotary cutting tool, often multipoint. The bit is pressed against the work piece and rotated at rates from hundreds to thousands of revolutions per minute. This forces the cutting edge against the work piece, cutting off chips from what will become the hole being drilled. Grinding is used to finish work pieces that must show high surface quality and high accuracy of shape and dimension.

## **4. SHORT DESCRIPTION OF SOFT COMPUTING IN DIFFERENT AREAS**

<b>S. No.</b>	<b>Field Applications</b>	<b>Soft Computing</b>
<b>1.</b>	Aircraft and air traffic	NN, FL, EC
<b>2.</b>	Communication networks	FL, NN, EC

3.	Control and Monitoring	EC, FL, NN
4.	Cooling and Heating	FL, NN, EC
5.	Data communications	FL, NN
6.	Data Security	ANN, FL
7.	Induction Motor Drives	FL, NN
8.	Inverters and Converters	FL, NN
9.	Manufacturing Technologies	FL, NN
10.	Mobile Robots	FL, NN
11.	Multi-Agent Robots	EC, FL
12.	Network Optimization	GA
13.	Power Control	EC
14.	Radio Planning	ANN
15.	Resource Allocation	ANN
16.	Satellite Imaging	ANN, FL, EA
17.	Scheduling	ANN
18.	Spacecraft	NN, FL
19.	Steel Process Industry	FL, NN
20.	Switched Reluctance Motor Drives	FL

## 5. CONCLUSION

As the development of soft computing progresses in several disciplines including physics, chemistry, biology and material science, computer scientists must be aware of their roles and brace themselves for the greater advancement of soft computing in the future. This paper has outlined different areas of soft computing. The successful applications of soft computing and the rapid growth suggest that the impact of soft computing will be felt increasingly in coming years. It encourages the integration of soft computing techniques and tools into both every day and advanced applications. It is hoped that it will benefit computer scientist who are keen to contribute their works to the field of soft computing.

## ACKNOWLEDGEMENT

First and foremost, I would like to thank God, the almighty for his blessings I would like to thank my wife Sarita Srivastava for standing beside me throughout my career while writing this paper. Also, I would like to thank my sons Er. Satyam Srivastava and Dr. Kumar Yash Srivastava and my daughter Dr. Shriya Srivastava.

## REFERENCES

- [1] Lotfi A. Zadeh (1994), "Fuzzy Logic, Neural Networks and Soft Computing", Communication of the ACM, 37(3), pp77-84.
- [2] M. R. Napolitano, J. L. Casanova, D. A. Windon, II, B. Seanor, and D. Martinelli (1999), "Neural and fuzzy reconstructors for the virtual flight data recorder," IEEE Trans. Aerosp. Electron. Syst., vol. 35, no. 1, pp. 61–71
- [3] N. L. Schneider, S. Narayanan, and C. Patel (2000), "Integrating genetic algorithms and interactive simulations for airbase logistics planning," in Soft Computing in Industrial Applications, Y. Suzuki, S. Ovaska, T. Furuhashi, R. Roy, and Y. Dote, Eds. London, U.K.: Springer- Verlag, pp. 309–317.
- [4] E. Gelenbe, I.W. Habib, S. Palazzo, and C. Douligeris (2000), "Guest editorial: Intelligent techniques in high speed networks," IEEE J. Select. Areas Commun., vol. 18, pp. 145–149
- [5] G. Chakraborty and B. Chakraborty (1999), "A genetic algorithm approach to solve channel assignment problem in cellular radio networks," in Proc. IEEE Midnight-Sun Workshop Soft Computing Methods in Industrial Applications, Kuusamo, Finland, pp. 34–39.
- [6] B. Dengiz, F. Altiparmak, and A. E. Smith (1997), "Local search genetic algorithm for optimal design of reliable networks," IEEE Trans. Evol. Comput., vol. 1, pp. 179–188.
- [7] X. M. Gao, X. Z. Gao, J. M. A. Tanskanen, and S. J. Ovaska (1997), "Power prediction in mobile communication systems using an optimal neural-network structure," IEEE Trans. Neural Networks, vol. 8, pp. 1446–1455.
- [8] A. Kamiya, K. Kawai, I. Ono, and S. Kobayashi (1999), "Adaptive-edge search for power plant start-up scheduling," IEEE Trans. Syst., Man, Cybern. C, vol. 29, pp. 518–530.
- [9] J. Wen, S. Cheng, and O. P. Malik (1998), "A synchronous generator fuzzy excitation controller optimally designed with a genetic algorithm," IEEE Trans. Power Syst., vol. 13, pp. 884–889.
- [10] C.-W. Liu, M.-C. Su, S.-S. Tsay, and Y.-J. Wang (1999), "Application of a novel fuzzy neural network to real-time transient stability swings prediction based on synchronized phasor measurements," IEEE Trans. Power Syst., vol. 14, pp. 685–692.
- [11] A. L. B. do Bomfim, G. N. Taranto, and D. M. Falcano (2000), "Simultaneous tuning of power system damping controllers using genetic algorithms," IEEE Trans. Power Syst., vol. 15, pp. 163–169.

## BIBLIOGRAPHY



Dr. Shailendra Kumar Srivastava is a popular name amongst the science enthusiasts. He is currently serving as the Principal of the prestigious Mahatma Gandhi Post Graduate College (Gorakhpur, Uttar Pradesh) for the past 7 years. He has also worked as Assistant Professor for 8 years and as Associate Professor for 20 years in the past