



# INTERNATIONAL JOURNAL OF ADVANCE RESEARCH, IDEAS AND INNOVATIONS IN TECHNOLOGY

ISSN: 2454-132X

Impact Factor: 6.078

(Volume 7, Issue 4 - V7I4-1744)

Available online at: <https://www.ijariit.com>

## Emotion-based media player

Dr. Rajesh K. S.

[rajeshks.hrr@gmail.com](mailto:rajeshks.hrr@gmail.com)

Rajarajeswari College of Engineering,  
Bengaluru, Karnataka

Indhu V. S.

[indhuvsriramareddy@gmail.com](mailto:indhuvsriramareddy@gmail.com)

Rajarajeswari College of Engineering, Bengaluru, Karnataka

Heba Farheen B.

[sanairaniabh@gmail.com](mailto:sanairaniabh@gmail.com)

Rajarajeswari College of Engineering,  
Bengaluru, Karnataka

Hemalatha K.

[hemakempaiah1998@gmail.com](mailto:hemakempaiah1998@gmail.com)

Rajarajeswari College of Engineering,  
Bengaluru, Karnataka

Sadiya Banu

[sadiyabanu099@gmail.com](mailto:sadiyabanu099@gmail.com)

Rajarajeswari College of Engineering, Bengaluru, Karnataka

### ABSTRACT

Currently, people will overall dynamically have more pressing factor since of the awful economy, high regular expenses, etc. Paying thoughtfulness regarding tune is a key development that assists with diminishing pressing factor. Regardless, it may be silly if the music doesn't actually gauge up for the current sensation of the crowd. Additionally, there is no music player which can pick tunes subject to the customer feeling. To deal with this issue, this endeavor proposes an inclination based music player, which can suggest songs reliant upon the customer's sentiments; hopeless, happy, fair-minded and irate. The application gets facial picture from a web camera. It then uses the request methodology to recognize the customer's inclination. Then, the application returns tunes which have a comparative perspective as the customer's inclination. The test outcomes show that the proposed approach can precisely mastermind the happy inclination considering the way that the beat extent of this inclination is wide.

**Keywords:** Music Player, Emotion, Heart Rate

### 1. INTRODUCTION

In the historical couple of years, the degree of Thai people who have pressure has high at an advanced rate. This is an aftereffect of a couple of reasons like commitments, upper thing esteem, dreadful cheap, tall regular expenses, etc. In 2017, the Thai part of mental prosperity accumulates info from Mobile organization for enthusiastic wellbeing counsels and presents that the pressing factor of Thai people would in everyday addition. The amount of calls is more than 30,000 noises which are double in 2014.

Pressure can be discarded in an unexpected way; for sample, works out, watching movies, reflection, and focusing on music. Various pieces of assessment express that music can assist people with decreasing pressing factor and be greater lucidity of brain. Unfortunately, focusing on music may be silly if the music doesn't by and large gauge up for the current sensation of the crowd. Therefore, to decrease pressure, the music with the suitable perspective should be picked. Also, in spite of the way that there are various music player applications, there is no application which can pick songs reliant upon the customer feeling.

To settle these limitations, this endeavor suggests an adaptable melody performer request which can recommend tunes subject to the customer feeling. To bunch the customer feeling, the proposed application applies the face picture. Right when the application gets a customer face picture from a camera, it examines what the customer feeling is. Then, it proposes tunes whose airs are relevant to that customer feeling. The customer and tune sentiments in this paper are solated into four sorts; specifically, fair, happy, sad and angry. The preliminary outcomes present that distinctive the happy inclination is the most definite with around 98%, while the accuracy of the bleak outlook recognizable proof is the least with 40%.

We proposed system that can recommend tunes reliant upon the customer feeling. To describe the customer feeling, the future claim relates together the beat and face picture. Right when the application gets face picture after a camera, it assesses what the customer feeling is. Then, it proposes airs whose demeanors are relevant to that customer feeling. Customer can change the tunes by giving the voice commitment to the structure.

Advantages:

Design an automatic music player recommendation with low cost and less complexity.

To develop an system which helpful to reduce stress

In the recent ages, the level of Thai individuals who must pressure has high at a advanced degree. This is a prompt outcome several reasons like responsibilities, higher thing regard, the horrible economy, high ordinary expenses, etc Stress can be cleared out in an unexpected way; for example, works out, watching films, reflection, and focusing on music. Numerous bits of exploration express that music can help individuals to lessen pressure and be more clarity of mind. Sadly, paying attention to music might be pointless if the music sometimes falls short for the current feeling of the audience. In this manner, to decrease pressure, the music with the appropriate state of mind ought to be picked. Besides, despite the fact that there are numerous music play

## **2. RELATED WORK**

### **A. Music Emotion Classification**

Robert E. Thayer applies musicality, beat, force, pitch, and tone to perceive music sentiments. He portrays feeling types reliant upon liveliness and tension. The energy of the music is a range among peaceful and red hot, while the pressing factor is an extent of lively and anxious/hopeless. This assessment isolates the music sentiments hooked on 8 sorts; specifically, excess, fretful/excited, joy, awfulness, peaceful, blazing, bright, and anxious/dreary.

Y. Song et al relate a SVM-based philosophy for orchestrating the music sentiments reliant upon marks of the Past.FM site. There are 4 sentiments gave herein investigation; specifically, merry, furious, forsaken, and loosen up.

Demeanor Cloud a continuous music perspective insight instrument, orders music sentiments into 5 sorts; explicitly strong, lively, party, loosen up and hopeless. It relates the SVM library to separate the inclination dataset. The result is then presented by using a Flash player.

Disadvantages of Existing System:

Accuracy is less

Implementation cost is high and more complexity.

It is suitable for specific dataset standards.

### **B. Human Emotion Classification**

In the recent ages, the level of Thai individuals who must pressure has high at a advanced degree. This is a prompt outcome several reasons like responsibilities, higher thing regard, the horrible economy, high ordinary expenses, etc Stress can be cleared out in an unexpected way; for example, works out, watching films, reflection, and focusing on music. Numerous bits of exploration express that music can help individuals to lessen pressure and be more clarity of mind. Sadly, paying attention to music might be pointless if the music sometimes falls short for the current feeling of the audience. In this manner, to decrease pressure, the music with the appropriate state of mind ought to be picked. Besides, despite the fact that there are numerous music play

### **Overview**

To reduce the stress for the user.

To Implement automatic emotion recognition from the facial emotion. To build an efficient music player based on our emotion

### **Scope of the work**

Feeling Based Music player is a valuable application for music audience members with an advanced cell and an Internet association. The application is available by any individual who makes a profile on the framework. The application is intended to meet the accompanying necessities of the clients as portrayed under 1. Making a record or joining, marking in Adding tunes Removing tunes Updating tunes Personalized play-list Recommendations Capturing feeling utilizing camera

## **3. SYSTEM SPECIFICATION REQUIREMENT**

### **Feasibility System**

The reachability of the job is explored in this phase and key arrangement is forward-thinking with a particularly wide diagram for the responsibility a few clarifications. During structure assessment the adequacy evaluation of the proposed framework is to be complete. This is to assurance that the proposed structure isn't a stack to the union. For legitimacy valuation, certain energy for the fundamental supplies on behalf of the advancement is head.

Three main thoughts linked by the chance taxation stand

ECONOMICAL ACHIEVABILITY

TECHNICAL ACHIEVABILITY

SOCIAL ACHIEVABILITY

### **Economical Achievability**

He reachability of the task is bankrupt unhappy in this phase and key game-plan is cutting-edge with an astoundingly clearing procedure for the undertaking a few articulations. During structure appraisal the worthiness valuation of the proposed framework is to be ended. This is to promise that the planned structure isn't a heap to the union. For authenticity evaluation, certain energy for the fundamental supplies for the improvement is pivotal.

### **Technical Achievability**

This assessment is would to payment the exact presence of care, that is, the specific necessities of the turn of events. Any framework made should not have a charm on the open unequivocal assets. This will start high requests on the open unequivocal assets. This will start high requests existence set on the customer. The made framework should have an unassuming need, as insignificant or illegal changes are needed for doing this arrangement.

### Social Achievability

The part of education is to check the equal of confirmation of the development by the client. This union is the way toward setting up the customer to use the structure capably. The client ought not to touch compromised by the system but rather recall it as a need. The level of assertion by the customers simply depends on the techniques used to show the customer the system and make him familiar with it. His level of sureness ought to be raised so he is moreover prepared to make some obliging appraisal, which is welcomed, as he is the last client of the basis. This part depicts the utilitarian prerequisites of the framework for those necessities which are passed on in the standard language style.

### Functionality Requirements

This part portrays the utilitarian prerequisites of the framework for those necessities which are communicated in the regular language style. Make a Work area application utilizing Tkinter. User should stack the dataset. System will part the preparation and test information. System will save the preparation model in nearby circle. User should stack the information picture. System will consequently preprocess, standardize, remove the highlights and suggest the tune dependent all over feeling utilizing CNN of the info picture. Application ought to precisely suggest the tune dependent on their feeling.

### Non-functionality requirements

These are necessities that are not utilitarian in nature, that is, these are prerequisites inside which the structure should work. The program should act normally contained so it can without a doubt be moved beginning with one Computer then onto the following. It is normal that network affiliation will be open on the PC on which the program lives.

Limit, adaptability and openness. The system will achieve 100% openness reliably. The system will be versatile to help additional clients and volunteers.

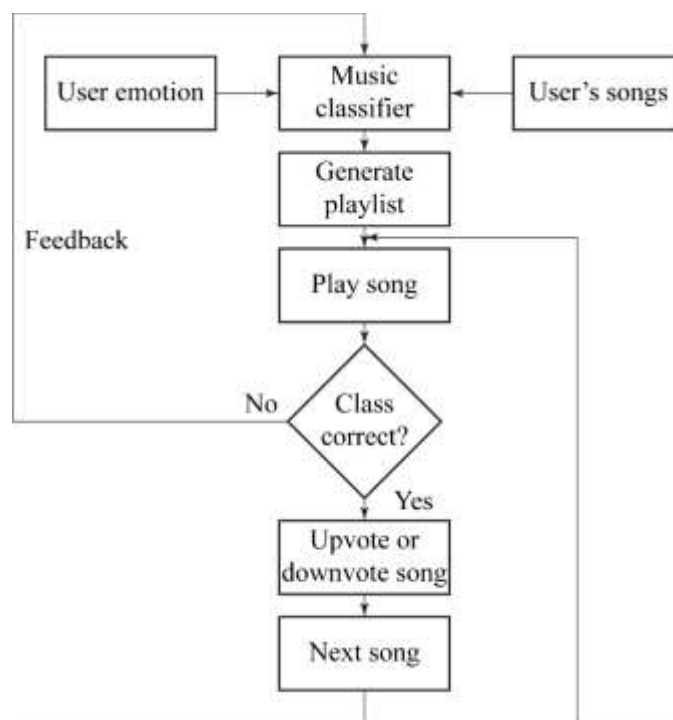
Maintainability. The framework ought to be upgraded for legitimacy, or simplicity of upkeep quite far. This might be accomplished through the utilization documentation of coding norms, naming shows, class libraries and reflection.

Randomness, obviousness and burden adjusting. The framework ought to be upgraded for acceptability, or simplicity of upkeep quite far. This might be accomplished through the utilization documentation of coding principles, naming shows, class libraries and deliberation. It ought to have haphazardness to check the hubs and ought to be load adjusted.

## 4. SOFTWARE AND HARDWARE REQUIREMENT/SPECIFICATION

There are a few things that ought to be considered to ensure the improvement phase of the framework can run effectively. There are programming and equipment particular. Programming is an applied element which is a bunch of PC projects, methodology, and related documentation worried about the activity of an information handling framework. Hardware is fragment devices which are regularly acquainted into or periphery with a PC case to make a PC whereupon structure writing computer programs is presented including a firmware interface.

### System Architecture



Construction was made in the wake of intimating the Russell 2-D Valence-Excitement Model and Geneva Feeling Wheel. After the organizing technique is done, a playlist of important tunes is conveyed. Equivalent tunes are gathered while conveying the playlist.

Closeness between tunes was constrained by separating tunes over 50ms expands, zeroed in on each 10ms time window. After careful insights, we found that the length of these ranges is on the critical level of an average song note.

Cosine distance work was utilized to decide the likeness between sound documents. Highlight esteems relating to a sound document were contrasted with the qualities (for similar highlights) comparing to sound records having a place with a similar class mark.

The suggestion motor has a twofold component; it suggests tunes dependent on: User's apparent state of mind. User's inclination.

### **Input / Output Design**

The information arrangement is the connection between the information structure and the customer. It contains the making affirmation and hypothesis for data approach and those techniques are essential to put trade data to a usable arrangement for overseeing can be created by contemplating the PC to examine data from a made or printed record or it can occur by having people entering the data directly into the system. The game-plan of data twirls around controlling the degree of data required, controlling the bumbles, avoiding delay, avoiding extra means and keeping the cycle clear. The data is coordinated in such a way so it outfits security and convenience with holding the insurance. Data Configuration thought about the going with things:

What data must remain agreed by way of information? How the data must remain worked with or coded? The talk by work with the functioning workforce in open-handed information. Means for planning input chains and steps to shadow when goof happen

### **Output Design**

A excellence crop is one, which sees the fundamentals of the end customer and offerings the data clearly. In any arrangement likely results of availability are given to the clients and to different constructions over incomes. In yield plan not settled everlastingly how the data is to be taken out for guaranteed need what's more the printed copy yield. It is the most monstrous and direct source data to the client. Proficient and fit yield system manages the design's relationship to benefit client dynamic. Designing PC crop must to last in a coordinated, all around investigated way; the right crop should be made while guaranteeing that each yield parcel is composed so individuals will discover the advancement can utilize acceptably and reasonably. Unequivocally when inspection plan PC crop, they should Recognize the specific yield that is required to meet the necessities. Choice projects for presenting data. Make record, report, or different outlines that cover data made by the framework. The yield kind of a data design ought to achieve something like one of the going with targets. Convey data about earlier works out, current status or projections of What might be on the horizon Signal fundamental occasions, openings, issues, or cautions. Activate an activity. Settle an activity.

## **5. SYSTEM MODULES**

The framework created by us incorporates following modules as follows:

- Face Detection
- Training Model
- Emotion Classification
- Music Recommendation

### **Face Detection**

The chief focal point of face clear certification structure is to see the face in the edge by decreasing the outer aggravations and different areas. The means pulled in with the Face Area Collaboration are Image pyramid Histogram of Organized Points Linear Classifier

The data that are procured are weakened into the investigating picture using picture pyramid into various scales. The use of this structure is basically to dispense with features while diminishing the exacerbation and various parts. The low pass picture pyramid technique (in any case called Gaussian pyramid) contains smoothing the packaging and subsampling it by diminishing its fair, the cycle ought to be on various events to get an optimal result that close to the ful fillment of the affiliation we get an edge like the first at any rate with a decreased impartial and a somewhat long flattening level

### **Training Model**

For the pooling procedure, we use max-pooling To oblige video data, the greatest pooling is acted in three estimations.

The designing of the model includes two CNNs, one for isolating hand features and one for removing chest region features. Each CNN is three layers significant. Local contrast normalization (LCN) is applied in the underlying two layers and all fake neurons are revised straight units (ReLUs ). By using CNN we are giving the readiness of the accumulated data.

### **Emotion Classification**

Once the expression is adequate seen, a skipping box will be practical as an overlay on the picture to detach the return for capital contributed (face) for additional evaluation. The killed return for cash contributed will following be composed using the "Marker" toil which is in like manner a called content to disconnect the 68 facial accomplishment places and save them in a show. The informative record to the side in the places of interest get-together will be set in as a confirmation to a PCA decay code that will diminish the size of information and dispose of any connected assemblies leaving basically the essential fixations as head parts. The information is a 68x2 social affair; 68 focuses, each point with works with on x-hatchets and y-hatchets. The get-together will be changed over into a vector containing 136 line and 1 section. The facemask accomplishment removal code "Pointer" is ready with a colossal heap of pictures and accomplishment charts for each image.

### **Music Recommendation**

The input is gotten reliably so the camera is used to get the video and in a little while the spreading out is over.

The disguised Markov perfect blueprint is utilized for managing the spread-out pictures. The lodgings that are gotten are considered in all edges and all pixel plans with a decisive target of feeling depiction. The value of each accomplishment isn't settled consistently and is overseen for soon. The value of the classifier is around 90-95%. so that notwithstanding, when there are any upgrades in the face considering standard conditions the advancement can see the face and the inclination being passed on. The opinions are then seen utilizing the qualities that are gotten that are being set and from the worth of the pixel that is gotten is being showed up undeniably identifying with that of the attributes that are open as an edge in the code. The respect is progressed to the net alliance. The air is played from the affinity saw.

## **6. SYSTEM TESTING**

### **Testing**

The assistance taxing is to treasure messes up. Difficult is the way toward endeavoring to find each possible issue or lack in a work thing. It gives an approach to manage supervise check the comfort of locales, sub social events, parties or potentially something completed It is the way toward chipping away at software design with the presumption for assuring that the Software design structure fulfills its rudiments and client needs and doesn't come up short in a denied way. There are different sorts of test. Each test type pays special mind to a specific challenging urgent.

### **Unit Testing**

Element testing sets the course of action of assessments that embrace that private package accepting is working fittingly, and that program contributions produce affirmed yields. Each choice branch and inside code stream ought to be maintained. It is the awkward of individual programming units of the application .it is done get-togethers fulfillment of an individual unit before coordination. This is a significant testing, that depends upon information upon its new development and is recognizable. Unit tests perform focal tests at parcel level and test a particular business cycle, application, moreover structure procedure. Unit tests guarantee that each enamoring framework for a business cycle performs totally to the recorded focal points and contains unmistakably portrayed wellsprings of information and anticipated outcomes.

### **Incorporation Testing**

Blend exams are needed to exam shaped programming regions to pick whether they truly run as one program. Testing is event driven and is more stressed over the crucial aftereffect of screens or fields. Joining exams show that anyway the parts were uninhibitedly satisfaction, as shown by sensibly unit testing, the blend of areas is correct and dependable. Joining examing is unequivocally included uncovering the issues that rise up out of the blend of parts.

### **Functional Test**

Immense exams offer adroit shows that cutoff centers attempted are open as obliged by the business and express prerequisites, structure papers, and client guides. Utilitarian challenging is rotated around the going with effects:

saw classes of real data ought to be seen. saw classes of invalid data ought to be exonerated. saw cutoff points ought to be worked out. saw classes of utilization yields ought to be worked out. interfacing systems or methodologies ought to be invoked. Association and organizing of utilitarian exams depends upon supplies, key cutoff centers, or stunning evaluations. Moreover, exact joining relating to see Business measure streams; information fields, predefined measures, and reformist cycles should be considered for testing. Before basic testing is done, extra tests are seen and the mind bogging worth of current still unsure.

### **Framework Test**

Outline testing promises that the total worked with programming structure meets necessities. It exams a strategy to guarantee known and clear outcomes. A portrayal of framework testing is the approach designed construction compromise exam. Improvement testing depends on measure depictions and moves, featuring pre-driven joint exertion affiliations and affiliation efforts.

### **White Box Testing**

White Box Testing is an irksome anywhere wherein what analyser contemplates the inside end eavors, headway and verbal of the thing, or possibly its inspiration. It is reason. It is used to exam districts that can't be got from a divulgence level.

### **Discovery Testing**

Revelation Testing will offer the thing with no data a possibility the inside exercises, plan or language of the module being tried. Revelation exams, as most various kinds of exams, ought to be outlined from a legitimate source report, for instance, express or requirements archive, for instance, detail or necessities record. It is an irksome where the thing under exam is regulated, as an exposure .you can't "see" into it. The exam gives data sources and responds to yields pardoning how as far as possible. Critical exams give conscious shows that cutoff focuses tried are available as compelled by the business and express requirements, structure documentation, and customer manuals. Utilitarian testing is revolved about the successful with things: saw classes of credible information should be perceived. saw courses of invalid information should be pardoned. perceived limits should be worked out. perceived classes of usage yields should be worked out. interfacing frameworks or techniques should be summoned. Affiliation and arranging of useful exams relies upon necessities, key cutoff focuses, or dumbfounding assessments. Also, accurate joining identifying with see Business measure streams; data fields, predefined measures, and reformist cycles ought to be considered for testing. Before huge testing is done, additional tests are seen and the incredible worth of current still uncertain.

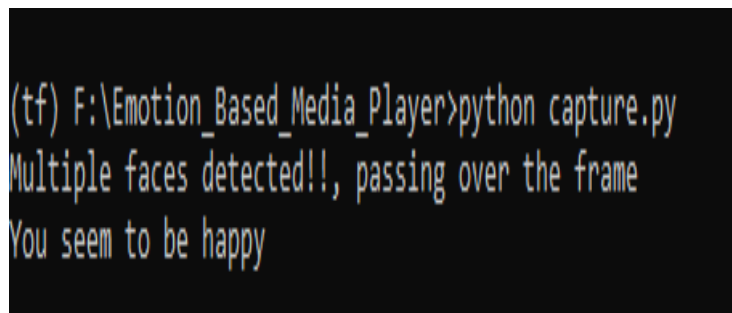
### Integration Testing

Programming joining examining is the reliable mix testing of something like two worked with programming pieces on a solitary stage to make disappointments accomplished by interface leaves. The undertaking of the joining test is to watch that pieces or programming applications, for example partitions in a thing framework or – one move forward – programming applications at the affiliation level – accomplice without mess up. All the examinations alluded to above passed effectively. No flaws experienced.

### Acceptance Testing

Customer Acknowledgment Challenging is a basic period of some assignment and needs colossal joint exertion by the end customer. It furthermore ensures that the development meets the legitimate necessities. Every one of the assessments suggested above accepted sensibly. No distortions experienced.

## 7. EXPERIMENTAL RESULTS



## 8. CONCLUSION

This paper suggests a tendency built tune player, which is executed as an Android request. The application expects to propose tunes subject to the clients' notions. To put together the accepting, the client's pulse and facial picture are dismantled ward on the beat ranges and Face API autonomously. Then, at that point, given the client's tendency, the application proposes the immense tunes dependent upon the client propensity mode. On the off chance that the client picks the positive mode, the application will suggest positive tunes. On the other hand, it will suggest tunes with a negative viewpoint considering the way that the clients need to convey their disdain, bother or stress. Concerning pulse based arrangement technique, the trial results show that uncontrolled climate influences enormously on the accuracy of pulse identification.