



# INTERNATIONAL JOURNAL OF ADVANCE RESEARCH, IDEAS AND INNOVATIONS IN TECHNOLOGY

ISSN: 2454-132X

Impact Factor: 6.078

(Volume 7, Issue 3 - V7I3-2138)

Available online at: <https://www.ijariit.com>

## Here expert map community program-product portfolio operations and spatial solutions

Shubham Dhawale

[sdhawale799@gmail.com](mailto:sdhawale799@gmail.com)

Yeshwantrao Chavan College of Engineering (YCCE),  
Nagpur, Maharashtra

Akshay Rathod

[akshayrathod2202@gmail.com](mailto:akshayrathod2202@gmail.com)

Yeshwantrao Chavan College of Engineering (YCCE),  
Nagpur, Maharashtra

Abhinav Wasekar

[Abhinavwasekar@gmail.com](mailto:Abhinavwasekar@gmail.com)

Yeshwantrao Chavan College of Engineering (YCCE),  
Nagpur, Maharashtra

Manish Hadap

[m.hadap@gmail.com](mailto:m.hadap@gmail.com)

Yeshwantrao Chavan College of Engineering (YCCE),  
Nagpur, Maharashtra

### ABSTRACT

*HERE Maps are used by millions worldwide through mobile apps, social networks and in cars equipped with a navigation system. With HERE Map Creator, you can edit your own real-life experience of your surroundings directly into HERE Maps. You can add or update roads, routes, places and house numbers to bring accuracy and context to the digital world. To use the HERE map creator, firstly create an account. After signing in with the account, now you can start exploring various geographical location and can update missing or incorrect information. To ensure the accuracy and quality of HERE maps, all the community content is verified by HERE's Geo-analyst before it gets updated and integrated into HERE maps. To study Maps represent the real world on a much smaller scale. They help you travel from one location to another. They help you organize information. They help you figure out where you are and how to get where you want to go. Maps are an important part of our everyday lives. We use them for driving directions, to look up restaurants, stores and many more places. We covered two sections in it. First section summarizes about learning and accessing of the tool and the other section focuses on the background and purpose of the duties that were assigned to us which particularly included adding missing roads, POIs and PA. Further after we have to study about the Electric Vehicle (EV) and its features and provide the solution how HERE maps gains the opportunity to innovate and leave its prints in molding the drawbacks of EV.*

**Keywords:** POI (Point of Interest), PA, API

### 1. INTRODUCTION

HERE Map Creator, you can edit your own real-life experience of your surroundings directly into HERE Maps. You can add or update roads, routes, places and house numbers to bring accuracy and context to the digital world. HERE Maps are used by millions worldwide through mobile apps, social networks and in cars equipped with a navigation system.

### 2. REVIEW OF LITERATURE

[1.] Hanan A. Taher has done the survey on Mapping Environmental Sounds Using Google Map (Acoustic Maps). In this survey authors discuss improvements and enhancements of maps using sound. Modern lives are dominated by what people see, and so there are many travel guides described wonderful places to visit. However, the sounds of these places are part of the experience. In some cases, what people hear is more important and interesting than what they see. This paper presents a new technique that gives an approach to combine map locations with their environmental sounds. It identifies places with unique sounds and encourages people to become interested in what they hear. The system is a collaborative data input, which allows public contribution in recording and archiving. Users are allowed to participate and upload their own sounds onto an efficient mapping system (Google map). The idea is to develop an audio map application; it is a great way to encourage people to gather audio and plot sounds to locations. The system is equivalent to Google Street View but with embedding audio will be Audio Street View.

[2.] Oki Ari Saputra, Fatwa Ramdani and Mochamad Chandra Saputra has done the survey on Comparison Analysis of Google Maps, Wisepilot, and Here Wego With User-Centered Design

(UCD) Approach & Cartography. In this survey authors discuss improvements and enhancements of maps using sound. Application testing is measured from the user's point of view by highlighting five aspects of testing, which are functionality, effectiveness, efficiency, reliability, usability, and cartography. This research aims to make a comparison between Google Maps, Here Wego, and Wisepilot applications on the Android operating system as a better alternative that should be used in searching locations on maps and navigation routes through user satisfaction testing. Applications in this test are used in the recommended navigation routes and locations in Malang which requiring several types of testing on each application. For each application is tested and evaluated by five aspects of testing using Web Quality Evaluation Method (WebQEM) method and cartography rules.

The writer has analysed and made a comparison of test results that were conducted on each aspect based on the standard assessment categories in each aspect tested. The Google Maps application is superior to other three applications based on four of the five aspects tested: functionality, effectiveness, efficiency, reliability, usability.

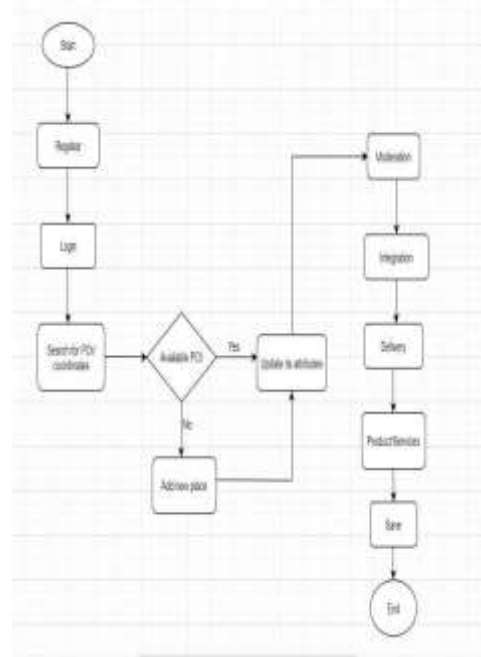
### 3. ALGORITHM

- Firstly, sign-in to map creator.
- Click the 'Add road' option at the top-right corner of the tool.
- Click on the map to set the starting point of the road and draw its course. Each click inserts a new 'shape point' that allows you to follow the road's curves better.
- To finish the road, double-click where you want the road to end or click the End road button on top. Add more information about the new road in the Details panel.
- When the roads are saved on the HERE map creator, then these roads are verified by the HERE's Geo-analysts and it takes a period of about 14 days to get verified.



### 4. SOFTWARE ARCHITECTURE

Fig. Flowchart for addition of POI



### 5. CONCLUSION AND FUTURE SCOPE

Study the HERE Map Creator Tool and find out and add the missing roads, places on it. Maps represent the real world on a much smaller scale. They help you travel from one location to another. They help you organize information. They help you figure out where you are and how to get where you want to go. First section summarizes about learning and accessing of the tool and the other section focuses on the background and purpose of the duties that were assigned to us which particularly included adding missing roads, POIs and PA. The task related to the development is to find the nearby EV charging stations and to calculate the range of our EV vehicle. Here map creator tool provides you to edit your own real-life experiences of your surroundings directly into HERE Maps. The map creator tool is very handy to operate in both of your desktop and android device. You can add or update roads, routes, places and house numbers to bring accuracy and context to the digital world. HERE Maps are used by millions worldwide through mobile apps, social networks and in cars equipped with a navigation system.

### 6. REFERENCES

- [1] <https://www.here.com/>
- [2] <https://mapcreator.here.com/>
- [3] [https://en.wikipedia.org/wiki/Here\\_WeGo](https://en.wikipedia.org/wiki/Here_WeGo)
- [4] To add POI's, we have referenced:
- [5] Google maps :- [www.googlemaps.com](http://www.googlemaps.com)
- [6] Vymaps :- [www.vymaps.com](http://www.vymaps.com)
- [7] Justdial :- [www.justdial.com](http://www.justdial.com)