



INTERNATIONAL JOURNAL OF ADVANCE RESEARCH, IDEAS AND INNOVATIONS IN TECHNOLOGY

ISSN: 2454-132X

Impact factor: 6.078

(Volume 6, Issue 2)

Available online at: www.ijariit.com

Aditya Birla Capital Limited share analysis

Umang Aggarwal

aggarwalumang2@gmail.com

NMIMS Anil Surendra Modi School of Commerce, Mumbai, Maharashtra

ABSTRACT

The following research is done on Aditya Birla Capital Limited share. We have used Open Price, Last Price, Total Traded Quantity and Turnover to find the interpretation and predicting the future value so that the Investors could be benefited by predicting the future value and they could invest in the particular project.

Keywords— Aditya Birla, Future Value, Share

1. INTRODUCTION

Aditya Birla Capital Limited (ABCL) is the holding company for the financial services businesses of the Aditya Birla Group. Formerly known as Aditya Birla Financial Services Limited, ABCL's subsidiaries have a strong presence across Protecting, Investing and Financing solutions, ABCL is a universal financial solutions group catering to diverse needs of its customers across their life stages.

Powered by more than 18,000 employees, the subsidiaries of ABCL have a nationwide reach with 850+ branches and more than 2,00,000 agents / channel partners and several bank partners. As of June 30th, 2019, Aditya Birla Capital Limited manages aggregate assets worth Rs. 3000 plus billion and has a consolidated lending book of over Rs. 619 billion, through its subsidiaries and joint ventures. Aditya Birla Capital Limited is a part of the Aditya Birla Group, a US\$ 48.3 billion Indian multinational, in the league of Fortune 500. Anchored by an extraordinary force of over 120,000 employees, belonging to 42 nationalities, the Aditya Birla Group operates in 34 countries across the globe.

2. OBJECTIVE

Performing a research before making an investment is a must. It is only after a thorough research that you can make some assumptions into the value and future performance of an investment. Even if you are following stock trading tips, it ideal to do some research, just to ensure that you are making an investment that's expected to get you maximum returns. When you invest in equity, you purchase some portions of a business expecting to make money upon increase in the value of the business. Before buying anything, be it a car or phone, you do some degree of research about its performance and quality. An investment is no different. It is your hard-earned money that you are about to invest, so you must have a fair knowledge of what you are investing in.

3. DATA

OPEN PRICE	VALUE	LAST PRICE	VALUE
MINIMUM	78.5	MINIMUM	78.45
MAXIMUM	209.75	MAXIMUM	207.5

Total Traded Quantity	Value	Turnover	Value
MINIMUM	500352	Minimum	46093982.1
MAXIMUM	20016574	Maximum	4101733182

3.1 Open Price

Open price			
Class Interval	Bin value	Bin	Frequency
75-100	99	99	173
100-125	124	124	85
125-150	149	149	95

150-175	174	174	65
175-200	199	199	71
200-225	224	224	11

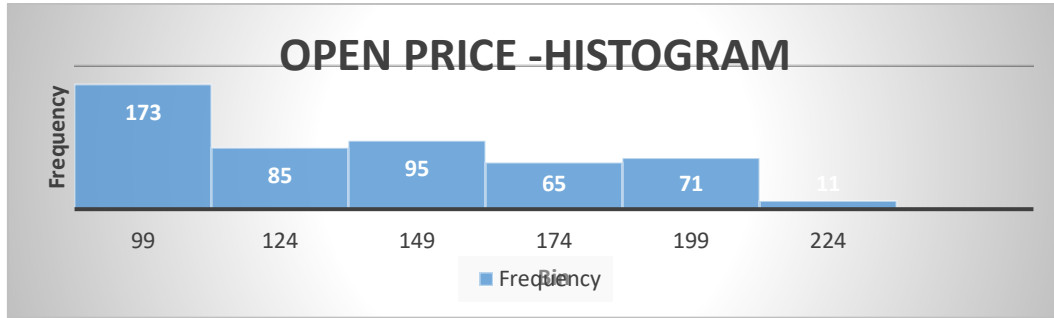


Fig. 1: Open Price Histogram

3.2 Last Price

LAST PRICE			
Class interval	Bin value	Bin	Frequency
75-100	99	99	173
100-125	124	124	86
125-150	149	149	95
150-175	174	174	64
175-200	199	199	71
200-225	224	224	11

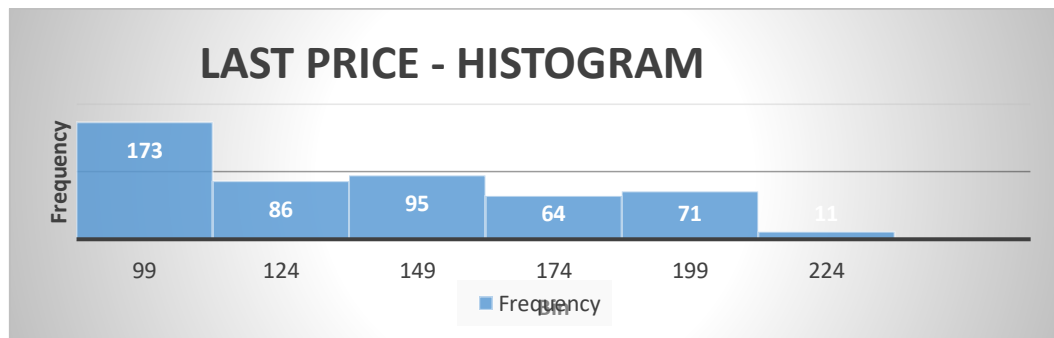


Fig. 2: Last Price Histogram

3.3 Total Traded Quantity

TOTAL TRADED QUANTITY			
Class interval	Bin value	Bin	Frequency
5,00,000 - 45,00,000	4499999	4499999	457
45,00,000 - 85,00,000	8499999	8499999	34
85,00,000 - 1,25,00,000	12499999	12499999	5
1,25,00,000-1,65,00,000	16499999	16499999	1
1,65,00,000-2,05,00,000	20499999	20499999	3

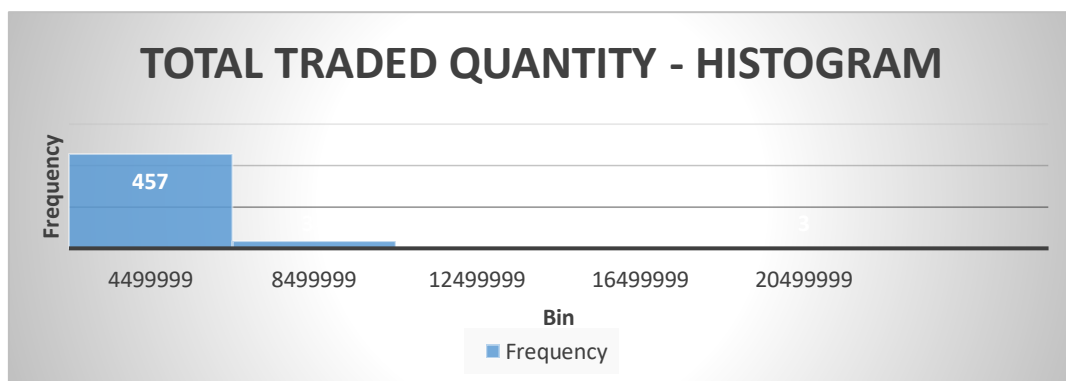


Fig. 3: Total Traded Quantity- Histogram

3.4 Turnover

Class interval	Bin value	Bin	Frequency
4,00,00,000 - 54,00,00,000	539999999	539999999	435
54,00,00,000 - 1,04,00,00,000	1039999999	1039999999	52
1,04,00,00,000 - 1,54,00,00,000	1539999999	1539999999	5
1,54,00,00,000 - 2,04,00,00,000	2039999999	2039999999	5
2,04,00,00,000 - 2,54,00,00,000	2539999999	2539999999	0
2,54,00,00,000 - 3,04,00,00,000	3039999999	3039999999	1
3,04,00,00,000 - 3,54,00,00,000	3539999999	3539999999	1
3,54,00,00,000 - 4,04,00,00,000	4039999999	4039999999	0
4,04,00,00,000 - 4,54,00,00,000	4539999999	4539999999	1

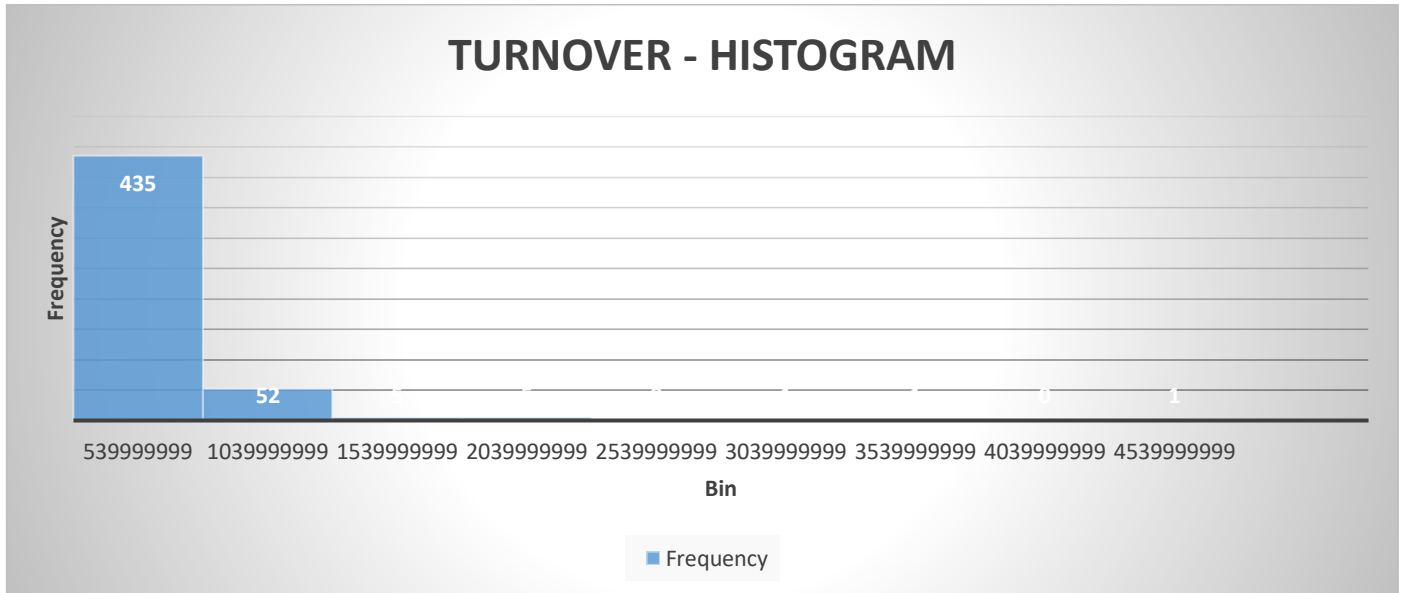
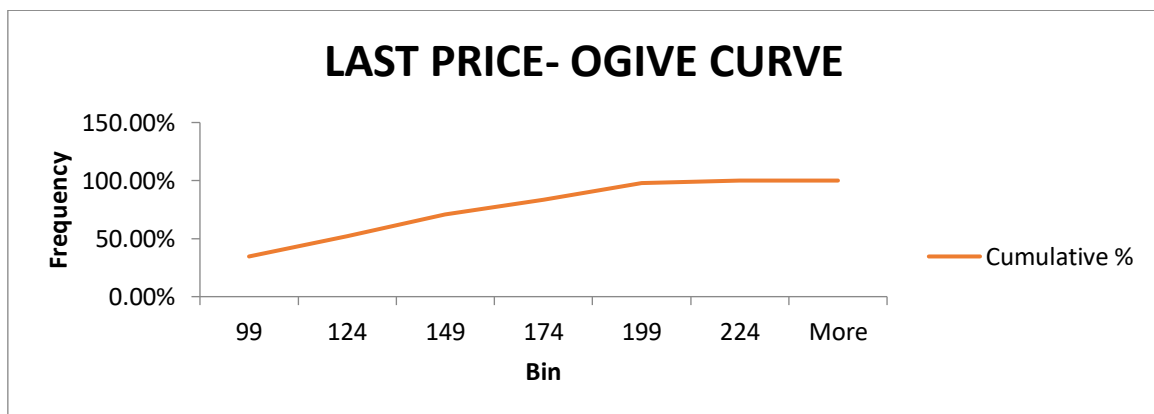
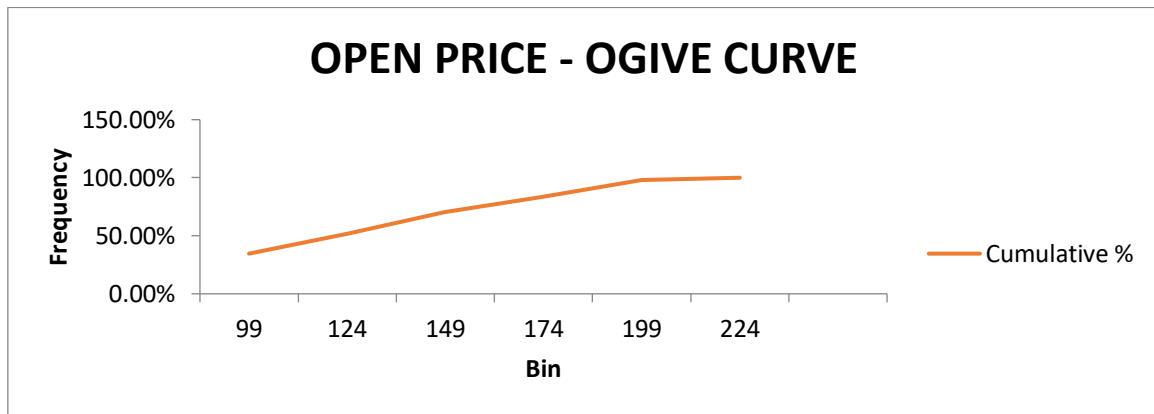
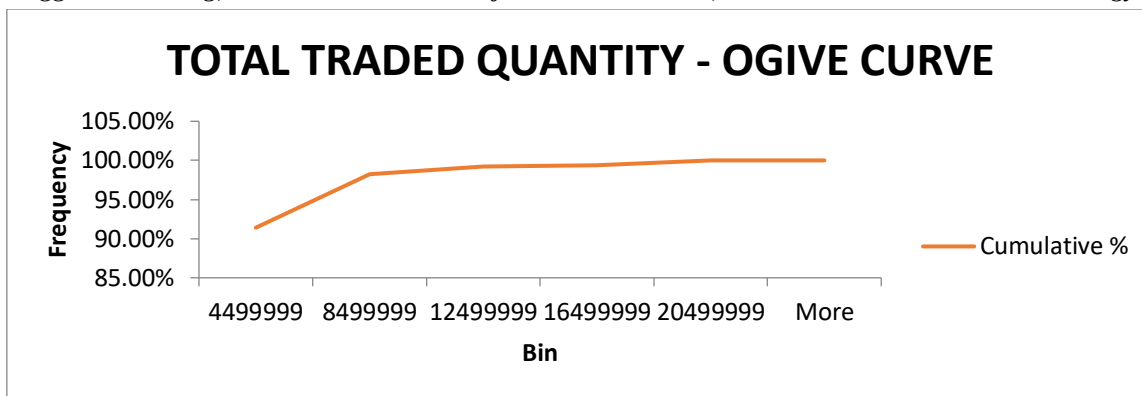


Fig. 4: Turnover- Histogram

O-GIVE CURVE OF THE ABOVE VARIABLES





4. INTERPRETATION

4.1 Interpretation of Histogram

- OPEN PRICE -The highest frequency is 173 which lies in 75-100 class interval, the lowest frequency is 11 which lies 200-225 class interval. From this we can make out that most of the open price of share of AB capital is from range 75-100.
- CLOSE PRICE - The highest frequency is 173 which lies in 75-100 class interval, the lowest frequency is 11 which lies 200-225 class interval. From this we can make out that most of the last price of share of AB capital is from range 75-100.
- TOTAL TRADED QUANTITY - The highest frequency is 457 which lies in 5,00,000 - 45,00,000 class interval, the lowest frequency is 1 which lies 1,25,00,000 - 1,65,00,000 class interval. From this we can make out that most of the Total traded quantity of share of AB capital is from range 5, 00,000 - 45, 00,000.
- TURNOVER - The highest frequency is 435 which lies in 4, 00, 00,000-54, 00, 00,000 class interval, the lowest frequency is 0 which lies 2 different class intervals. From this we can make out that most of the Turnover of share of AB capital is from range 4, 00, 00,000-54, 00, 00,000

4.2 Interpretation of O-Give Curve

- OPEN PRICE - The highest frequency accounts to 34.60% of the total data of open price
- CLOSE PRICE - The highest frequency accounts to 34.60% of the total data of Last price
- TOTAL TRADED QUANTITY - The highest frequency accounts to 91.40% of the total data of Total Traded Quantity
- TURNOVER - The highest frequency accounts to 87% of the total data of Turnover

4.3 Interpretation of Correlation

	Open Price	Last Price	Total Traded Quantity	Turnover
Open Price	1			
Last Price	0.99778709	1		
Total Traded Quantity	0.307191254	0.323702571	1	
Turnover	0.520694806	0.535534375	0.937179152	1

Open and Last Price has imperfect positive correlation between them. Open Price also has imperfect positive correlation with Total traded Quantity and Turnover and similar from the information above Last price also has imperfect positive correlation with Total Traded Quantity and Turnover. It means that if Open Price or Last Price increases Total Traded and Turnover will also increase

4.4 Interpretation of regression

SUMMARY OUTPUT

FOR - TOTAL TRADED OUTPUT

Regression Statistics	
Multiple R	0.401516383
R Square	0.161215406
Adjusted R Square	0.157840015
Standard Error	1845730.559
Observations	500

	Coefficients	Standard Error
Intercept	67004.31472	300081.8702
Open Price	-196776.7216	34029.67742
Last Price	215070.2872	34172.77011

Interpretation:

$$Y = A + Bx$$

$$Y = 67004.314 - 196776.72x \text{ (x=Open price)}$$

$$Y = 67004.314 + 215070.28x \text{ (x=Last price)}$$

WHEN TOTAL TRADED OUTPUT CHANGES FOLLOWING WOULD BE THE EFFECT

OPEN PRICE: If Open price increases by 19677.72 units then Total Traded Quantity will decrease by 1 unit with a constant value of 67004.314

LAST PRICE: If Close price increases by 215070.28 units then Total Traded Quantity will increase by 1 unit with a constant value of 67004.314

SUMMARY OUTPUT FOR - TURNOVER

Regression Statistics

Multiple R	0.573559364
R Square	0.328970344
Adjusted R Square	0.326270024
Standard Error	297142212.5
Observations	500

Coefficients *Standard Error*

Intercept	-354215305.8	48309863.21
Open Price	-30618216.87	5478401.812
Last Price	36010154.36	5501438.153

$$Y = -354215306 - 30618216.9x \text{ (where } x = \text{open price)}$$

$$Y = -354215306 + 36010154.36x \text{ (where } x = \text{last price)}$$

WHEN TURNOVER CHANGES FOLLOWING WOULD BE CHANGES

OPEN PRICE - If Open price increases by 30618216.9 units then Turnover will decrease by 1 unit with a constant value of -354215306

LAST PRICE - If Close price increases by 36010154.36 units then Turnover will increase by 1 unit with a constant value of -354215306

5. CONCLUSION

The analysis could be concluded that if Open Price or Last Price increases Total Traded and Turnover will also increase. From the above the data the future predicted value could also be find.

6. REFERENCES

[1] <https://www.nseindia.com/>