



INTERNATIONAL JOURNAL OF ADVANCE RESEARCH, IDEAS AND INNOVATIONS IN TECHNOLOGY

ISSN: 2454-132X

Impact factor: 4.295

(Volume3, Issue2)

Available online at: www.ijariit.com

A Review on Improve Energy Efficiency in Cognitive Radio Ad Hoc Networks by Selecting Secondary User

Mr. Raghunath K. Borkar*

MSSCET, Maharashtra

raghunathborkar22@gmail.com

Prof. Sheshnarayan Ghungrad

MSSCET, Maharashtra

shesh_01@rediff.com

Abstract— *Wireless networks combining the advantages of both mobile ad-hoc networks and infrastructure wireless networks have been receiving increased attention due to their ultra-high performance. Users have capability to sense available spectrum in Cognitive Radio Networks (CRNs). Users can opportunistically access to the spectrum. Paper proposed for energy consumption for CRNs, Which is higher in traditional Cognitive Radio Ad Hoc Network (CRAHNs). Users mainly depend on spectrum access so the requirement of network architecture is user spectral. In the proposed network architecture, only parts of user's are equipped with Cognitive Radio (CR) module. Additionally user management done, a minimum number of users are selected to sense available spectrum, which aims at reducing the energy consumption further. The minimum number of users selection problem is formulated as a optimal routing algorithm problem under the constrains of energy efficiency and the real-time available spectrum information. Hence, a distributed optimal routing algorithm is proposed to calculate the optimal solution. The optimal routing algorithm in the proposed network architecture outperforms and traditional Cognitive Radio Ad Hoc Networks in energy efficiency.*

Keywords— *Wireless networks, Routing algorithm, Load balancing, Congestion control, Energy Efficiency.*

I. INTRODUCTION

The licensing of the wireless spectrum is currently undertaken on a long-term basis over vast geographical regions. In order to address the critical problem of spectrum scarcity, the Federal Communications Commission (FCC) has recently approved the use of unlicensed devices in licensed bands. Consequently, dynamic spectrum access (DSA) techniques are proposed to solve these current spectrum inefficiency problems. This new area of research foresees the development of cognitive radio (CR) networks to further improve spectrum efficiency. The basic idea of CR networks is that the unlicensed devices (also called cognitive radio users or secondary users) need to vacate the band once the licensed device (also known as a primary user) is detected. CR networks, however, impose unique challenges due to the high fluctuation in the available spectrum as well as diverse quality of service (QoS) requirements [1].

CR Technology is the promising solution to the problem of the limited spectrum and the inefficiency of the spectrum usage. CR technology makes it possible for users to access the spectrum. In this paper, we mainly focus on CRAHNs. The existing architectures of CRAHNs consider that all SUs are equipped with CR module. The spectrum causes adverse effects on the performance of conventional communication protocols besides, all SUs need to sense available spectrum [2]. There is installation of CR module will bring extra cost to SUs. In addition, energy will be consumed when SUs sense available spectrum. Hence, the energy cost for cognitive functionality is undesirable for the battery powered devices of SUs [3].

CCH Cognitive Capacity Harvesting architecture is shown as Fig. 1. CCH consists of four categories of entities: Secondary Service Provider (SSP), Base Stations (BSs), Relay Stations (RSs) and SUs. BSs and RSs have cognitive function, they can use spectrum to communicate with each other. Secondary user (SUs) do not have cognitive function, they cannot use spectrum [4]. Cognitive radio (CR) technology has been proposed as an enabling solution to alleviate the spectrum underutilization problem. With the capability of sensing the frequency bands in a time and location-varying spectrum environment and adjusting the operating parameters based on the sensing outcome, CR technology allows an unlicensed user (or, secondary user (SU)) to exploit those frequency bands unused by licensed users (or, primary users) in an opportunistic manner[5].

We assume that there are $|N|$ OCRUs at time t in CRAHNS. $|N|$ OCRUs form set N . Only OCRUs can use idle spectrum in the proposed network architecture. OCRUs must accurately know the information of the available licensed spectrum. CRUs will cost much energy for sensing available spectrum.

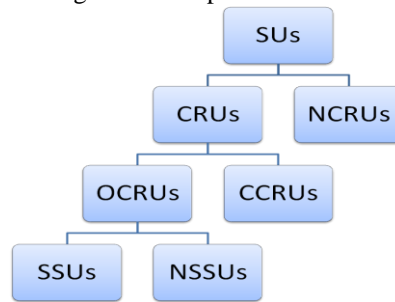


Fig 2. The relationship between different kinds of SUs

Hence, we aim at selecting $|n|$ OCRUs among $|N|$ OCRUs to sense available spectrum, and $n \subseteq N$. n is the set which consists of all SUs in the proposed network architecture. $|N|$ is the total number of OCRUs. $|n|$ is the total number of SUs, $|n| \subseteq |N|$. We must guarantee that $|n|$ SUs could accurately and instantaneously sense the available spectrum information for $|N|$ OCRUs. We study how to select the fewest SUs among $|N|$ OCRUs.

We use r to denote communication radius of OCRUs. For m users communication radius is r_m . The coverage area of communication radius of SU m is the neighbouring area of SU m . Any OCRU in neighbouring area of OCRU m can use the available licensed spectrum information sensed by OCRU m directly [4],[9].

III. SELECTION OF SUs

A. Communication Radius

As shown in Fig.3 Selection of minimum number of SSUs, we first describe how to calculate the communication radius [10] of OCRUs. According to, we can know that the relationship between the received power of the receiver and the transmission power of the transmitter, $P_r = \gamma d^{-\alpha} P_t$ (1) where P_r is the received power of the receiver, P_t is the transmission power of the transmitter, γ is the antenna related constant, d is the distance between transmitter and receiver, and α denotes the path loss factor. We assume that only when the received power is no less than P_k , the communication between transmitter and receiver will successes. P_k is a threshold of received power. We assume that the largest power of the OCRUs is P . For guaranteeing that two OCRUs can communicate with each other successfully, the following formula should be satisfied [4],[15].

$$P_k \leq \gamma d^{-\alpha} P$$

$$r = \left(\frac{\gamma P}{P_k}\right)^{1/\alpha}$$

B. Selection of Minimum Number of SSUs

Selection of minimum number of SSUs by using communication radius r . Inference of sensible region shown in Fig.3. The sensible region located around primary user and the secondary users. The SUs in sensible region can be traced by the communication bandwidth. Through witch optimal communication routing path can traced [14].

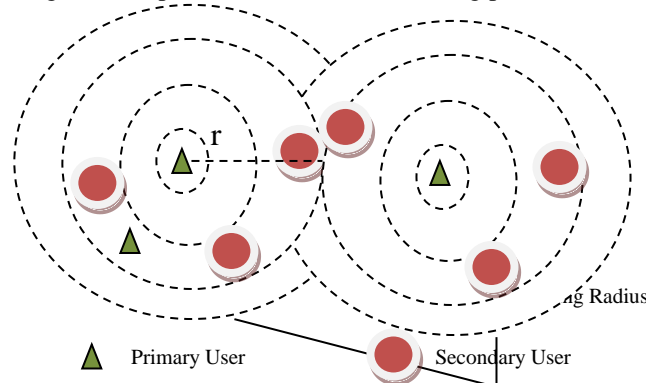


Fig. 3 Selection of minimum number of SSUs

1) Objective Function

The objective of the SSUs selection is to select the fewest SSUs under the constraints of condition 1 and condition 2. Hence, our objective function [4], [13] is

$$\min_{n \subseteq N} |n|$$

2) Condition 1

We assume that each spectrum sensing time of SSUs is T_s . The maximum transmission time for SSUs to transmit their sensing information to NSSUs is T_t . NSSUs can get their available licensed spectrum information from SSUs exactly only when there exists at least one same SSU within its neighbouring area during $T_s + T_t$. We use $\delta_{si}(t)$ to describe the communication relationship between SSU i and NSSU s . If $d_{si} \leq r$ during $[t+i; t+i + T_s + T_t]$, $\delta_{si}(t) = 1$. Otherwise, $\delta_{si}(t) = 0$. $t+i$ denotes the start time for SSU i to sense available licensed spectrum information [4]. d_{si} denotes the distance between SSU i and NSSU s . $\delta_{si}(t) = 1$ denotes that SSU i can communicate with NSSU s during $[t+i; t+i + T_s + T_t]$. $\delta_{si}(t)$ is defined as

$$\delta_{si}(t) = \begin{cases} 1; & \text{if } d_{si} \leq r \text{ during } [t+i; t+i + T_s + T_t] \\ 0; & \text{otherwise} \end{cases}$$

3) Condition 2

According to the definition of capacity, we can get the capacity C_{ij} between SSU i and NSSU j is

$$C_{ij} = W_{ij} \log_2 \left(1 + \frac{\gamma d_{ij}^{-\alpha} P_{ij}}{N_0} \right)$$

Where W_{ij} denotes the communication bandwidth between SSU i and NSSU j . P_{ij} is the transmit power of SSU i when it sends data to NSSU j . N_0 is the noise power [4]

IV. OPTIMAL ROUTING ALGORITHM

The non-linear programming problem that we founded is a set cover problem. The set cover problem is an NP hard problem. Hence, we propose a distributed optimal routing to get a near-optimal solution. We describe the optimal routing as follows.

1. OCRU i calculates how many OCRUs in its neighbouring area.
2. If there are f OCRUs in the neighbouring area of OCRU i , the communication number of OCRU i is f [4],[12].
3. Using radius communicate with nearest SUs form shortest path.
4. If some OCRUs have the same communication range, we will select the OCRU i that has the smallest T_i to participate in sorting.
5. Then delete other OCRUs that have the same communication number with OCRU i .
6. We begin the validate process which start at the first OCRU i . We validate whether OCRU i can satisfy shortest path distance is equal or less than forming radius of communication.
7. OCRUs in the neighbouring area of OCRU i can get their available spectrum information from OCRU i . If OCRU i does not satisfy shortest path distance is equal or less than forming radius of communication the next OCRU with shortest path will be validated [11].
8. If all OCRUs radius are validated with forming path, and none of OCRUs satisfies shortest path, OCRU i will sense available spectrum by itself.

V. PROPOSED NETWORK MODEL

A. Optimal Path Selection

The flow of network model is shown in Fig.4 It shows that traversing from source node to destination node while transferring packets. In cognitive radio transmission the selection method for path finding done with shortest path finding, from which we find the nearby SSU's. Frame structure consists of sensing and data transmission slots. Optimum route problem under an end-to-end error rate constraint and carries a comparative study of the power optimal graphs obtained with those a per hop error rate constraint [7].

Routing protocols are required to route data packets from source to destination. Routing protocols are basically categorized in to table driven and on demand routing protocols. In table driven routing protocols, up-to-date routing information is maintained by each node in the network. When a node requires a route to a destination, it initiates a route discovery process within the network [18]. When a packet is sent along the shortest path, it will be forwarded in the same way as the traditional IP networks.

For achieving the maximum normalized throughput of the SU and control the interference level to the legal PUs, the optimal frame length of the SU is found via simulation [17]. Design of the sensing length to maximize the achievable throughput of a single channel cognitive radio network, under the constraint of the probability of detection. To provide better service for SUs, it is advisable to aggregate the perceived spectrum opportunities obtained through simultaneous sensing over multiple channels.

As soon as this overlay node gets the packet, it removes the outer IP header and forwards the packet to the final destination (or possibly to another overlay node). By this methodology, one can utilize as many alternative paths as needed. Note that using this architecture, we can still employ the simple shortest path routing inside the network. This allows us to use the existing traditional routers without any modification [19].

B. Selection of minimum number of SSUs

Nodes are located at all the source destination nodes as well as at some core nodes. While traversing from source to destination the selection of user pattern done through categorisation of user according to their sensible property i.e. when nearby secondary user selection done through optimal routing. While selection optimum number of user each node will trace by near neighboured and with self for user validation. By which no same SSUs can be detect while validation, if same distance SSUs can detect, the selection method can choose one of them and delete another selected SSUs. So that the error rate in selection method can be minimised. Validation process checks all the selected SSUs [16].

While validation of SSUs the data packets attached with user which communicate with throughput optimal unit and with energy optimisation unit for computing end point energy.

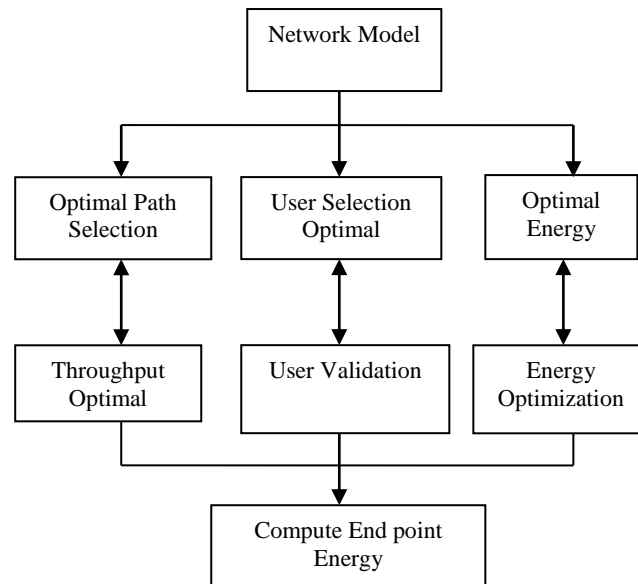


Fig 4. Optimal routing networking model

c. Energy optimization

Energy optimization calls for a cross-layer optimization across all the protocol layers and networking functions, such as transmission and spectrum handoff in our case. The energy consumed in the secondary network consists of consumption for i) data transmission, ii) spectrum sensing, iii) the communication protocol, including information exchange for cooperative spectrum sensing and for organizing the secondary transmissions [20].

Additionally, the circuit power consumed by the transmitter and the receiver, and the power consumed for tuning to the channel to be sensed can give a substantial part of the energy consumption. The optimal energy unit choose the node having SSUs property and assign the categorization unit to them by which energy calculation done on each node. Optimal energy unit transfer this data to energy optimisation unit by which energy unit checks the default unit of energy according to transmission unit, while checking it shows some cache property assign with each node and also with transmission relays by clearing the cache assign with this unit the optimisation unit verify the end point energy also the transmission speed for data packets transferring can be minimised.

CONCLUSION

In this paper, CRAHNs network architecture is proposed. In the proposed network architecture, only parts of SUs are installed CR modules. Besides, a minimum number of SSUs among OCRUs are selected to sense available spectrum information. The minimum number of SUs selection problem is mathematically formulated as a non-linear programming problem. Because of the non-linear programming problem that we founded is an NP-hard problem, a distributed optimal routing is proposed. Results show that the proposed optimal routing in the proposed network architecture works much better in energy efficiency.

REFERENCES

1. I.F. Akyildiz, W.-Y. Lee, and K. R. Chowdhury, "CRAHNs: Cog-nitive radio Ad Hoc Networks," Ad Hoc Netw., vol. 7, no. 5, pp. 810– 836, Jul. 2009
2. I.F. Akyildiz, W.-Y. Lee, M. C. Vuran, and S. Mohanty, "NeXt generation/dynamic Spectrum Access/cognitive radio wireless networks: A survey," Comput. Netw., vol. 50, pp. 2127–2159, 2006.
3. Y. Song and J. Xie, "Finding out the liars: Fight against false chan-nel information exchange attacks in cognitive radio ad hoc networks," in Proc. IEEE Global Commun. Conf., 2012, pp. 1–5.
4. "Corporate Secondary User Selection In Cognitive Radio Adhac Network" Aohan Li1,2, Guangjie Han1, Lei Shu3, Mohsen GuizaniY.2016 IEEE.
5. Y. Kondareddy and P. Agrawal, "Selective Broadcasting In Multi-Hop Cognitive Radio Networks," in Proc. IEEE Sarnoff Symp., 2008.

6. J. Zhao, H. Zheng, and G. Yang, "Spectrum Sharing Through Distributed Coordination In Dynamic Spectrum Access Networks," *Wireless Commun. Mobile Comput.*, vol. 7, pp. 1061–1075, Nov. 2007.
7. S.-Y. Ni, Y.-C. Tseng, Y.-S. Chen, and J.-P. Sheu, "The Broadcast Storm Problem In A Mobile Ad Hoc Network," in *Proc. 5th Annu. ACM/IEEE Int. Conf. Mobile Comput. Netw.*, 1999, pp. 151–162.
8. A.Qayyum, L. Viennot, and A. Laouiti, "Multipoint Relaying For Flooding Broadcast Messages In Mobile Wireless Networks," in *Proc. 35th Annu. Hawaii Int. Conf. Syst. Sci.*, 2002, pp. 3866–3875.
9. J. Qadir, A. Misra, and C. T. Chou, "Minimum Latency Broadcast-Ing In Multi-Radio Multi-Channel Multi-Rate Wireless Meshes," in *Proc. IEEE CS 3rd Annu. Sens. Ad Hoc Commun. Netw.*, 2006, vol. 1, pp. 80–89.
10. Z. Chen, C. Qiao, J. Xu, and T. Lee, "A Constant Approximation Algorithm For Interference Aware Broadcast In Wireless Networks," in *Proc. IEEE Conf. Comput. Commun.*, 2007, pp. 740–748
11. Y.Song and J. Xie, "QB²IC: "A Qos-Based Broadcast Protocol Under Blind Information For Multi-Hop Cognitive Radio Ad Hoc Networks," *IEEE Trans. Veh. Technol.*, vol. 63, no. 3, pp. 1453–1466, Mar. 2014.
12. R. Gandhi, A. Mishra, and S. Parthasarathy, "Minimizing Broad-Cast Latency And Redundancy In Ad Hoc Networks," *IEEE/ACM Trans. Netw.*, vol. 16, no. 4, pp. 840–851, Aug. 2008.
13. C.J. L. Arachchige, S. Venkatesan, R. Chandrasekaran, and N. Mittal, "Minimal time broadcasting in cognitive radio networks," in *Proc. 12th Int. Conf. Distrib. Comput. Netw.*, 2011, pp. 364–375.
14. Y.Song and J.Xie, "Performance Analysis of Spectrum Handoff for Cognitive Radio Adhoc Networks Without Common Control Channel Under Homogeneous Primary Traffic," in *Proc. IEEE Conf. Comput. Commun.*, 2011, pp. 3011–3019.
15. Jianyang Zeng and Wen-Jing Hsu, "Optimal Routing in a Small-World Network, Center for Advanced Information Systems", Nanyang Technological University, Nanyang Avenue, Singapore
16. Abbas Karimia, Kiarash Aghakhanib, Seyed Ehsan Manavia, Faraneh Zarafshand, S.A.R Al-Haddad "Introduction and Analysis of Optimal Routing Algorithm in Benes Networks", 2014 The Authors. Published by Elsevier B.V. This is an open access article under the CC BY-NC-ND license
17. Wuchen Tang, Muhammad Zeeshan Shakir, Muhammad Ali Imran, Rahim Tafazolli, and Mohamed-Slim Alouini, "Throughput Analysis for Cognitive Radio Networks with Multiple Primary Users and Imperfect Spectrum Sensing" August 23, 2012
18. Dr. Sapna Gambhir, Parul Tomar, "Optimal Path Selection Routing Protocol in MANETs" International Journal of Scientific & Engineering Research Volume 3, Issue 7, June-2012 1 ISSN 2229-5518
19. Tuna Guven, Chris Kommareddy, Richard J. La, Mark A. Shayman, Bobby Bhattacharjee "Measurement Based Optimal Multi-path Routing" University of Maryland, College Park, MD 20742, USA, 0-7803-8356-7/04 (C) 2004 IEEE IEEE INFOCOM 2004
20. Hossein Shokri-Ghadikolaei, Ioannis Glaropoulos, Viktoria Fodor, Carlo Fischione, and Konstantinos Dimou "Energy Efficient Spectrum Sensing And Handoff Strategies In Cognitive Radio Networks" 30 Nov 2013
21. B.Wang, and K. J. R. Liu, "Advances in cognitive radio networks: A survey," in *IEEE J. Sel. Topics Signal Process.*, vol. 5, no. 1, pp. 5-23, Feb. 2011.
22. T. Jing, S. Zhu, H. Li, X. Cheng, and Y. Huo, "Cooperative relay selection in cognitive radio networks," in *Proc. INFOCOM*, pp. 175-179, Turin, Apr. 2013.
23. A.Cao, J. W. Mark, Q. Zhang, R. Lu, X. Lin, and X. Shen, "On optimal communication strategies for cooperative cognitive radio networking," in *Proc. INFOCOM*, pp. 1726-1734, Turin, Apr. 2013.
24. W. Li, X. Cheng, T. Jing, and X. Xing, "Cooperative multi-hop relaying via network formation games in cognitive radio networks," in *Proc. INFOCOM*, pp. 971-979, Turin, Apr. 2013.
25. G. Han, L. Liu, J. Jiang, L. Shu, "Gerhard Hancke. Analysis of Energy- Efficient Connected Target Coverage Algorithms for Industrial Wireless Sensor Networks," in *IEEE Transactions on Industrial Informatics*, 2015. DOI: 10.1109/TII.2015.2513767
26. G. Han, L. Wan, L. Shu, N. Feng, "Two Novel DoA Estimation Approaches for Real Time Assistant Calibration System in Future Vehicle Industrial," in *IEEE Systems Journal*, 2015. DOI: 10.1109/JSYST.2015.2434822
27. G. Han, A. Qian, J. Jiang, N. Sun, L. Liu, "A Grid-Based Joint Routing and Charging Algorithm for Industrial Wireless Rechargeable Sensor Networks," in *Computer Networks*. 2015. DOI: 10.1016/j.comnet.2015.12.014
28. G.Han, Y.Dong, H.Guo, L.Shu, D.Wu."Cross-layer Optimized Routing in Wireless Sensor Networks with Duty-cycle and Energy Harvesting." in *Wireless Communications and Mobile Computing*, Vol.15, pp:1957-1981, 2015
29. H. Yue, M. Pan, Y. Fang, and S. Glisic, "Spectrum and energy efficient relay station placement in cognitive radio networks," in *IEEE J. Sel. Areas Commun*, vol. 31, no. 5, pp. 883-893, May 2013.
30. M. Pan, C. Zhang, P. Li, and Y. Fang, "Spectrum harvesting and sharing in multi-hop cognitive radio networks under uncertain spectrum supply," in *IEEE J. Sel. Areas Commun*, vol. 30, no. 2, pp. 369-378, Feb. 2012.
31. B. Korte, and J. Vygen, *Combinatorial optimization: Theory and algorithms*. Springer, 2010
32. G. Brassard, and P. Bratley, *Fundamentals of algorithms*. Prentice Hall, 1995. 920